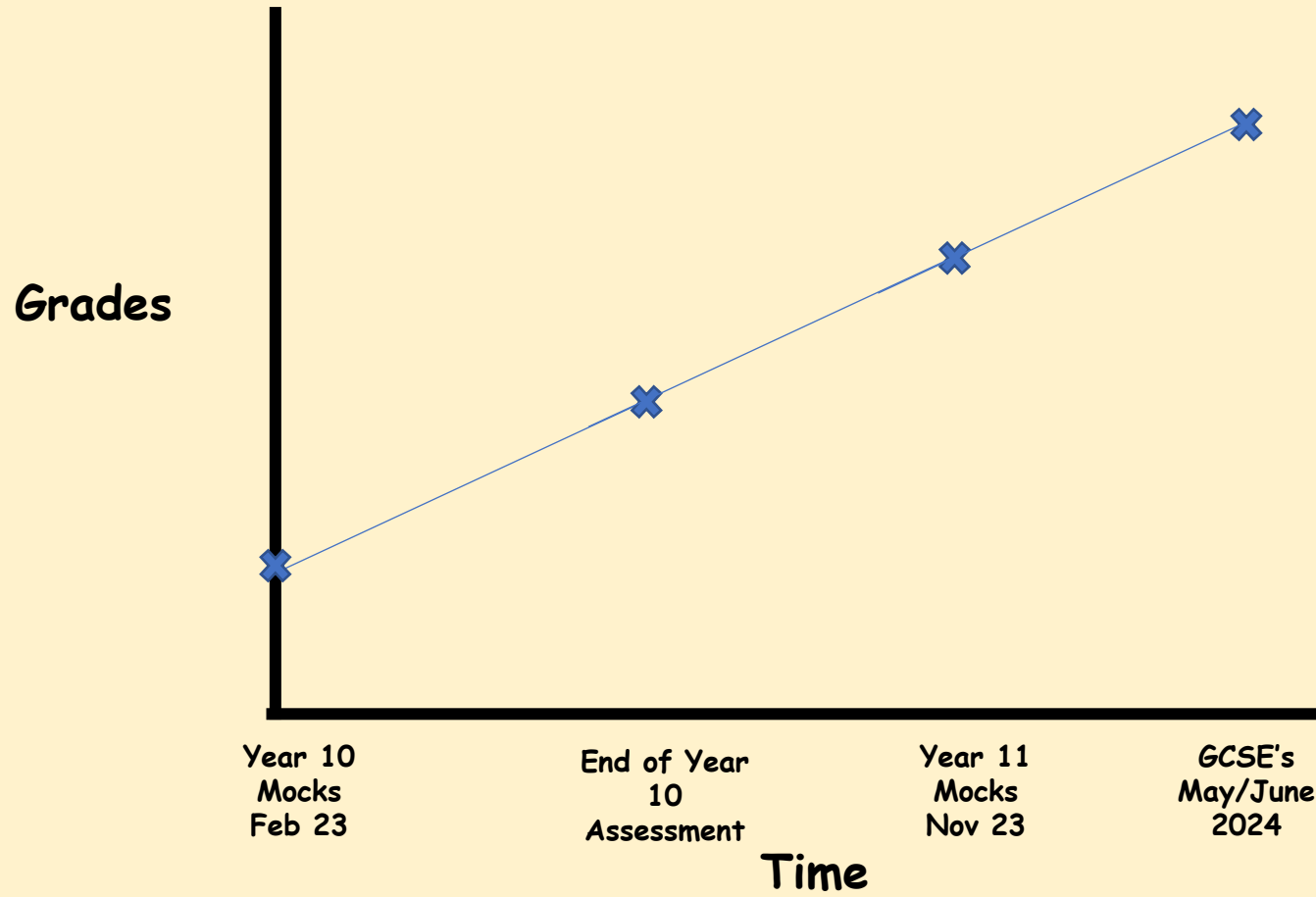


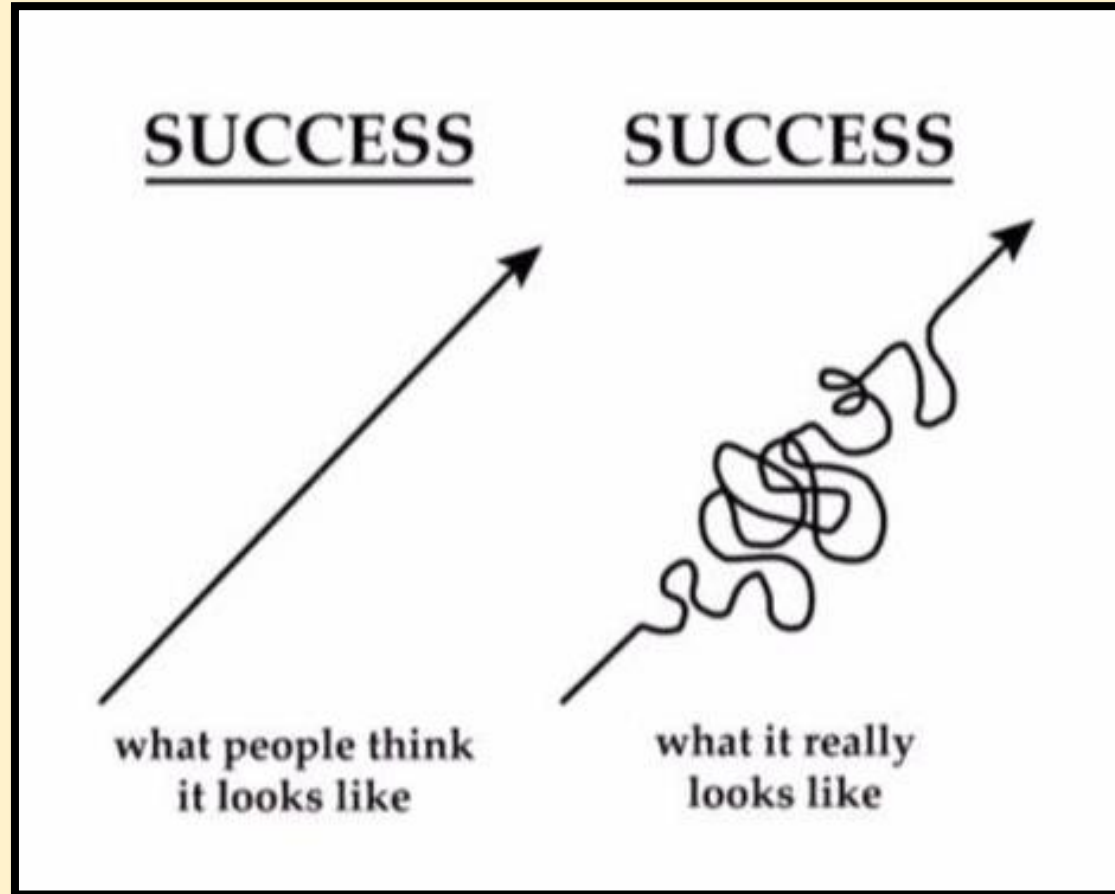
Welcome to Year 11



- What does Success Look Like?
- Career Ambitions
- Action planning
- The next steps school will take to help students achieve the best results possible.

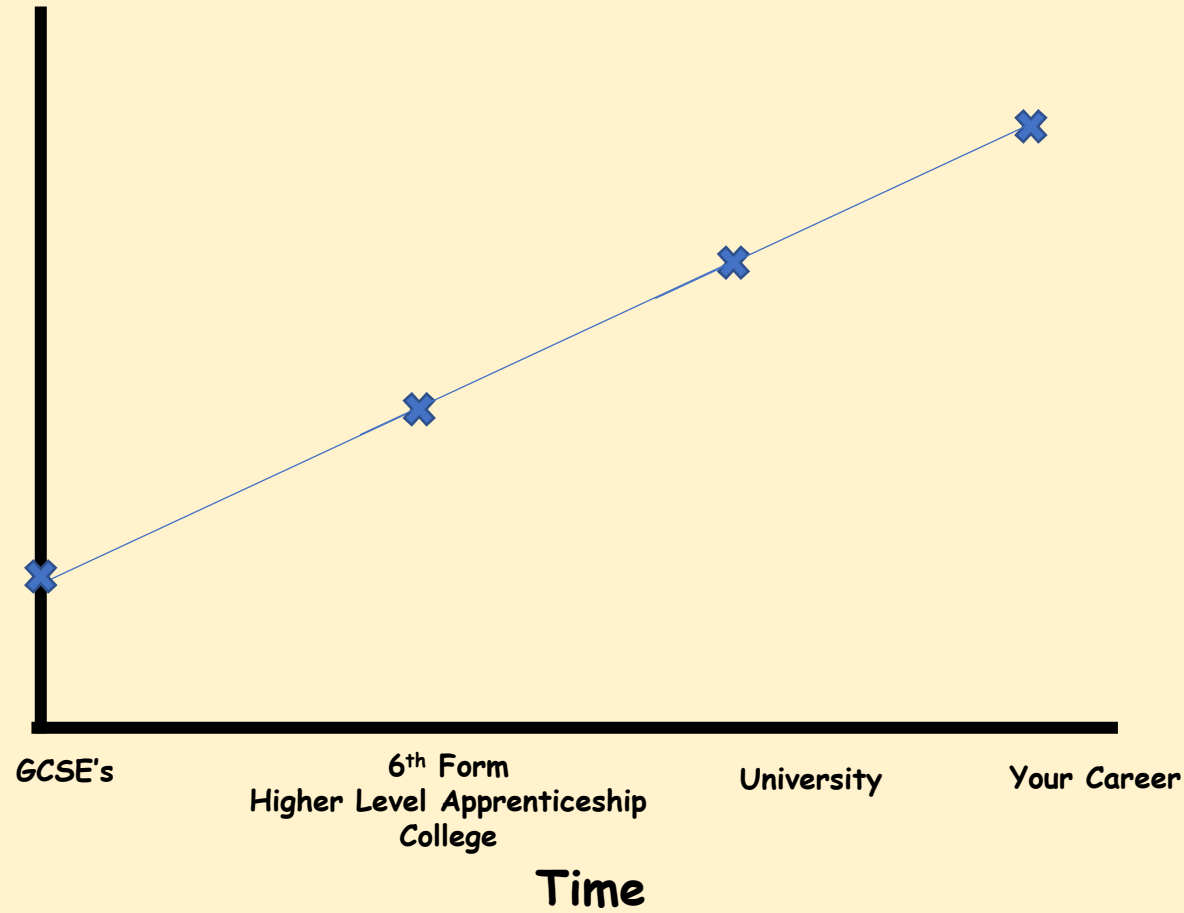






144

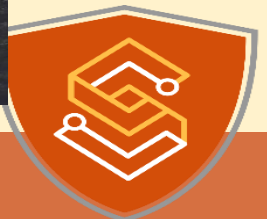




I don't know where I am
going, but I am on my way.

Voltaire

quotezfancy



Russell Group universities

- | | | |
|--|--|---|
| 1 University of Birmingham
www.birmingham.ac.uk
+44 (0)121 414 3344 | 9 Imperial College London
www3.imperial.ac.uk
+44 (0)20 7589 5111 | 17 University of Oxford
www.ox.ac.uk
+44 (0)1865 270 000 |
| 2 University of Bristol
www.bristol.ac.uk
+44 (0)117 928 9000 | 10 King's College London
www.kcl.ac.uk
+44 (0)20 7836 5454 | 18 Queen Mary University of London
www.qmul.ac.uk
+44 (0)20 7882 5555 |
| 3 University of Cambridge
www.cam.ac.uk
+44 (0)1223 337 733 | 11 University of Leeds
www.leeds.ac.uk
+44 (0)113 243 1751 | 19 Queen's University Belfast
www.qub.ac.uk
+44 (0)2890 245 133 |
| 4 Cardiff University
www.cardiff.ac.uk
+44 (0)2920 874 000 | 12 University of Liverpool
www.liverpool.ac.uk
+44 (0)151 794 2000 | 20 University of Sheffield
www.sheffield.ac.uk
+44 (0)114 222 2000 |
| 5 Durham University
www.dur.ac.uk
+44 (0)191 334 2000 | 13 London School of Economics and Political Science
www.lse.ac.uk
+44 (0)20 7405 7686 | 21 University of Southampton
www.southampton.ac.uk
+44 (0)23 8059 5000 |
| 6 University of Edinburgh
www.ed.ac.uk
+44 (0)131 650 1000 | 14 University of Manchester
www.manchester.ac.uk
+44 (0)161 306 6000 | 22 University College London
www.ucl.ac.uk
+44 (0)20 7679 2000 |
| 7 University of Exeter
www.exeter.ac.uk
+44 (0)1392 661 000 | 15 Newcastle University
www.newcastle.ac.uk
+44 (0)191 208 6000 | 23 University of Warwick
www2.warwick.ac.uk
+44 (0)24 7652 3523 |
| 8 University of Glasgow
www.gla.ac.uk
+44 (0)141 330 2000 | 16 University of Nottingham
www.nottingham.ac.uk
+44 (0)115 951 5151 | 24 University of York
www.york.ac.uk
+44 (0)1904 320 000 |





Name	Subjects/ Grades
Eng Lan	9
English Lit	8
Maths	7
Combined Science	8-7
His	9
Computing	8
Enterprise	Merit
Eng Lan	7
English Lit	8
Maths	9
Chem	9
Bio	8
Phy	8
Geo	7
Spanish	7
Engineering	Dist*





Eng Lan	7
English Lit	7
Maths	8
Geo	7
Spanish	7
Chem	8
Bio	8
Phy	7
Engineering	Dist*
Eng Lan	9
English Lit	8
Art	8
His	8
Bio	7
Eng Lan	7
English Lit	8
Maths	7
Phy	7
Geo/His	7
Art	8





Eng Lan	8
Maths	7
Combined Science	7-7
History	8
Spanish	7
Engineering	Dist
Harman Oliver	
English Lit	7
Maths	7
Combined Science	8-8
Geo	8
Sport	Dist
Eng Lan	8
English Lit	8
Maths	7
Bio	7
Phy	7
Engineering	Dist*
Eng Lan	7
English Lit	8
Art	9
Engineering	Dist*





Sixth Forms

New grading structure	Current grading structure
9	
8	A*
7	A
6	B
5	
4	C
3	D
2	E
1	F
	G
U	U

GOOD PASS (B/E)
3 and above = top of C and above

AWARDING
4 and above = bottom of C and above



Apprenticeships

THERE ARE FOUR TYPES OF APPRENTICESHIPS IN THE UK ✓

INTERMEDIATE	ADVANCED	HIGHER	DEGREE
Like 5 GCSEs, A*-C/4+	Like 2 A-levels	Like a foundation degree or above	Like a Bachelor's/ Master's degree
What qualifications can I get? Level 2 NVQ, Diploma, National Certificate	What qualifications can I get? Level 3 NVQ, National Certificate, BTEC	What qualifications can I get? Foundation degree, Bachelor's degree, Master's degree, Level 4-7 NVQ, Higher National Diploma	What qualifications can I get? Foundation degree, Bachelor's degree, Master's degree, Level 4-7 NVQ, Higher National Diploma



The Government has said that grade 4 is a 'standard pass'. Grade 5 is a '**strong pass**' and equivalent to a high C and low B on the old grading system. Grade 4 remains the level that students must achieve without needing to resit English and Maths post-16.

[AQA | Exams admin | Results days | Grading](#)

www.aqa.org.uk/exams-administration/results-days/grading

5+ in English and Maths



Understand Entry Requirements

Level	Qualifications	Entry Requirements
2	GCSE - grades 9, 8, 7, 6, 5, 4 Vocational - grades D2*, D2, M2, P2 Intermediate Apprenticeships	You are already studying at this level



Understand Entry Requirements

Level	Qualifications	Entry Requirements
2	GCSE - grades 9, 8, 7, 6, 5, 4 Vocational - grades D2*, D2, M2, P2 Intermediate Apprenticeships	You are already studying at this level
3	A levels or T Levels and Level 3 BTECs Advanced Apprenticeship	<ul style="list-style-type: none"> • 5 good GCSEs • English and Maths 4+ • Grade 6+ in the A Levels you wish to do • Grade 5+ in the LV3 Btec you wish to do
4	Higher apprenticeship Higher national certificate (HNC)	



Understand Entry Requirements

Level	Qualifications	Entry Requirements
2	GCSE - grades 9, 8, 7, 6, 5, 4 Vocational - grades D2*,D2,M2, P2 Intermediate Apprenticeships	You are already studying at this level
3	A levels or T Levels and Level 3 BTECs Advanced Apprenticeship	<ul style="list-style-type: none"> • 5 good GCSEs • English and Maths 4+ • Grade 6+ in the A Levels you wish to do • Grade 5+ in the LV3 Btec you wish to do
4	Higher apprenticeship Higher national certificate (HNC)	
5	Foundation degree Higher national diploma (HND)	
6	Degree apprenticeship Degree	
7	Master's degree	
8	PHD	



Russell Group universities

- | | | |
|--|--|---|
| 1 University of Birmingham
www.birmingham.ac.uk
+44 (0)121 414 3344 | 9 Imperial College London
www3.imperial.ac.uk
+44 (0)20 7589 5111 | 17 University of Oxford
www.ox.ac.uk
+44 (0)1865 270 000 |
| 2 University of Bristol
www.bristol.ac.uk
+44 (0)117 928 9000 | 10 King's College London
www.kcl.ac.uk
+44 (0)20 7836 5454 | 18 Queen Mary University of London
www.qmul.ac.uk
+44 (0)20 7882 5555 |
| 3 University of Cambridge
www.cam.ac.uk
+44 (0)1223 337 733 | 11 University of Leeds
www.leeds.ac.uk
+44 (0)113 243 1751 | 19 Queen's University Belfast
www.qub.ac.uk
+44 (0)2890 245 133 |
| 4 Cardiff University
www.cardiff.ac.uk
+44 (0)2920 874 000 | 12 University of Liverpool
www.liverpool.ac.uk
+44 (0)151 794 2000 | 20 University of Sheffield
www.sheffield.ac.uk
+44 (0)114 222 2000 |
| 5 Durham University
www.dur.ac.uk
+44 (0)191 334 2000 | 13 London School of Economics and Political Science
www.lse.ac.uk
+44 (0)20 7405 7686 | 21 University of Southampton
www.southampton.ac.uk
+44 (0)23 8059 5000 |
| 6 University of Edinburgh
www.ed.ac.uk
+44 (0)131 650 1000 | 14 University of Manchester
www.manchester.ac.uk
+44 (0)161 306 6000 | 22 University College London
www.ucl.ac.uk
+44 (0)20 7679 2000 |
| 7 University of Exeter
www.exeter.ac.uk
+44 (0)1392 661 000 | 15 Newcastle University
www.newcastle.ac.uk
+44 (0)191 208 6000 | 23 University of Warwick
www2.warwick.ac.uk
+44 (0)24 7652 3523 |
| 8 University of Glasgow
www.gla.ac.uk
+44 (0)141 330 2000 | 16 University of Nottingham
www.nottingham.ac.uk
+44 (0)115 951 5151 | 24 University of York
www.york.ac.uk
+44 (0)1904 320 000 |



Future Progression



- Senior leader meetings post mocks
- Future pathways
- Kent Choices
- 1-1 career interviews with careers advisor
- Unifrog in form time



Member of our SL6 Family



- Community development in the school you helped to start
- Support each other
- Support younger students & whole school activities
- Develop as a future leader



Choice of academic courses

You will study a combination of 3 courses from this list

- Engineering BTEC (equivalent to 1 A level)
- Sport BTEC (equivalent to 1 or 2 A levels)
- Art & Design
- English Literature
- Government & Politics
- Psychology
- Business
- Sociology

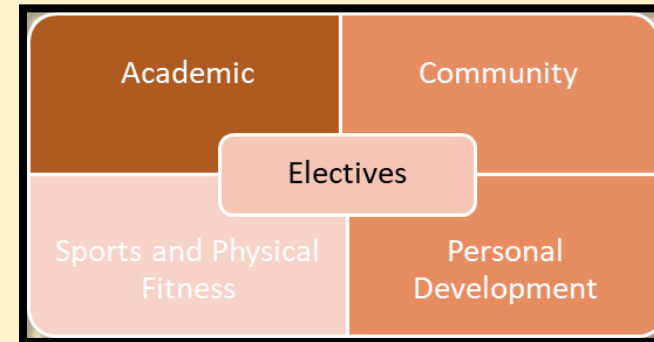
Courses will run subject to interest



Wider Personal Development

- Wednesday pm Elective
- Extended Project Qualification (*equivalent to AS Level*)
- Duke of Edinburgh

- Extra Curricular activities
- Leadership opportunities
- Career Support & workshops
- Work Experience
- Industry Partners
- University Partners



SL 6 Open Evening

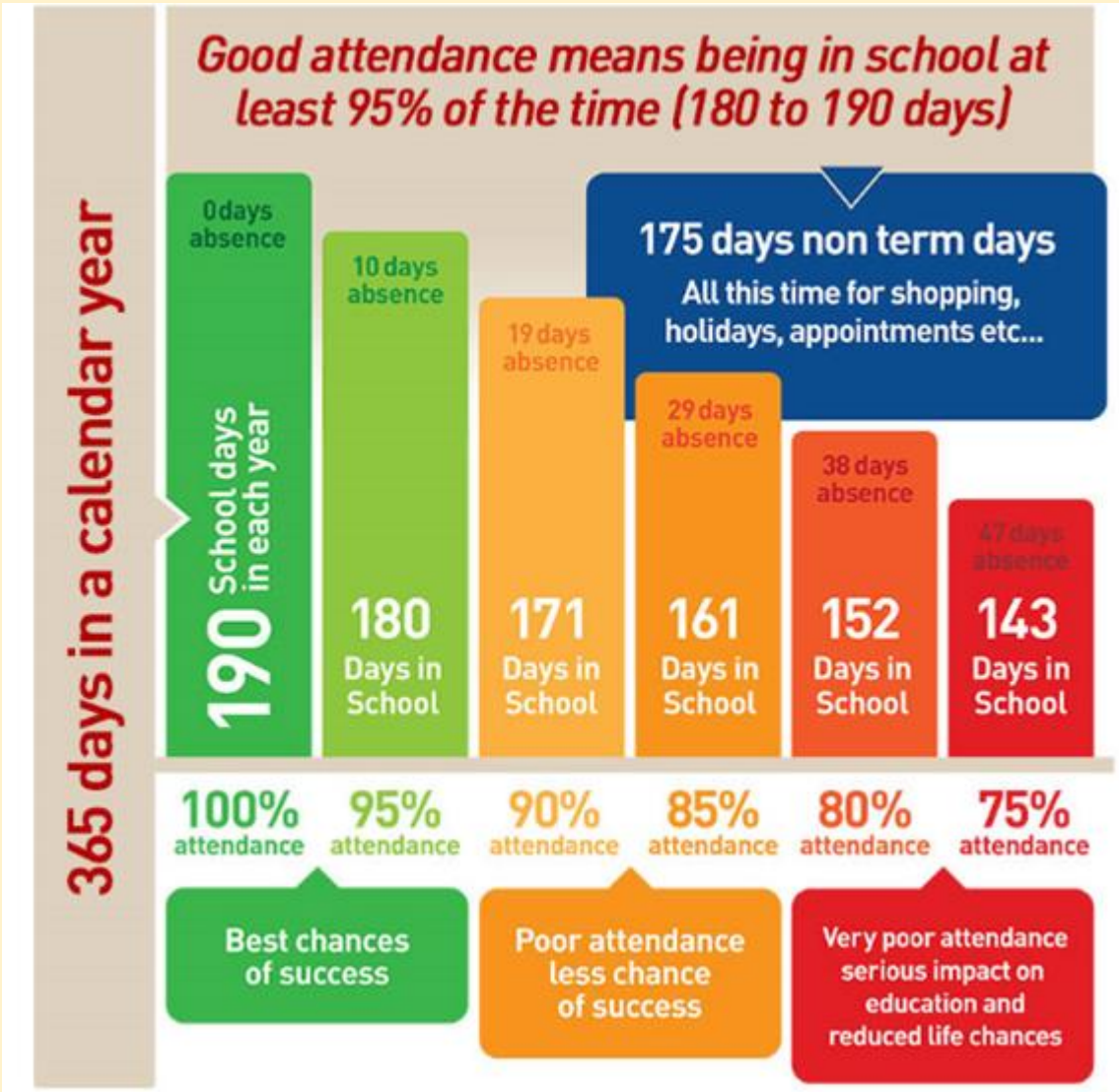


Wednesday 11th December 2023
5:30pm-8pm



We need your help!





96% - 96.9% = 34-46 lessons missed
Approx. 220 hours of learning missed

94% - 95.9% = 46-68 lessons missed
Approx. 275 hours of learning missed

90% - 93.9% = 68-114 lessons missed
Approx. 550 hours of learning missed

Below 90% = At least 114 lessons missed

Approx. 627 hours of learning missed



Year 11 lesson allocation

Subject	Periods Per Week
English	5
Maths	5
Science	6
Geography/ History	3
Option 1	3
Option 2	3
Spanish	3
Physical Education	1
Philosophy and Ethics/ Successful Lives	1



AQA : English

- Two separate GCSEs for everyone - legally required to do both, Literature and Language
- The best result will count double in progress and attainment measures



Edexcel : Maths

Foundation (grades 1-5)	Paper 1 Non-calculator 33.3% weighting 1 hour and 30 minutes 80 marks 	Paper 2 Calculator 33.3% weighting 1 hour and 30 minutes 80 marks 	Paper 3 Calculator 33.3% weighting 1 hour and 30 minutes 80 marks 
Higher (grades 4-9)	Paper 1 Non-calculator 33.3% weighting 1 hour and 30 minutes 80 marks 	Paper 2 Calculator 33.3% weighting 1 hour and 30 minutes 80 marks 	Paper 3 Calculator 33.3% weighting 1 hour and 30 minutes 80 marks 



Combined Science

- Students will study the AQA course of Combined Science: Trilogy. This results in 2 Science GCSEs.
- Students learn a wide range of science topics that enable them to understand things that happen in the world around them. This will be in the form of Biology, Chemistry and Physics units.



- Provides a good foundation for students who intend to study science or engineering courses post 16 (e.g. A-Levels or T-Levels)



- Students will gain experience of essential scientific skills and will be able to analyse a range of scientific problems



Combined Science: Trilogy

- Students will take 6 individual Science papers, each lasting 1 Hour and 15 Minutes and worth 70 marks each.
- These consist of 2 papers in Biology, 2 in Chemistry and 2 in Physics.
- Students study the AQA Combined Science: Trilogy Course
- Throughout the course there will be practical activities that are called Required Practical Activities (RPAs).
- RPAs and their content can come up as questions in your exams.
- Students will be entered for either a Higher or Foundation paper.



Separate Sciences (Triple)

- Separate Science is suited to individuals who have a real passion for science and who really enjoy the science that happens around them in everyday life.
- Students learn a broader range of topics and some topics are studied in greater depth.



- Students will gain even more experience of essential scientific skills and will be able to analyse more complex problems



Separate Science (Triple)

- The AQA GCSE exam course for Separate Science will consist of 6 exams at the end of year 11. 2 in Physics, 2 in Biology and 2 in Chemistry.
- Each exam is 1 hour 45 mins and worth 100 marks.
- The Separate Science course is also called Triple.
- You will come out with 3 GCSEs for science, 1 for Biology, 1 for Chemistry and 1 for Physics.
- Throughout the course there will be practical activities that are called Required Practical Activities (RPAs).
- RPAs and their content can come up as questions in your exams.
- Students will be entered for the Higher paper.



The Ebacc



A range of subjects that will allow students to flourish

Likely to be the core expectation for progression to more academic routes after year 11



PSA: Pearson Set Assignment

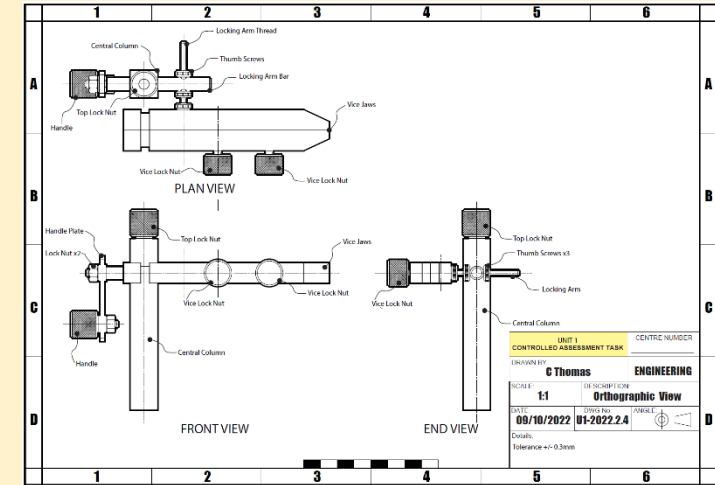
Date	
w/c 2nd Oct	Start of PSA
Friday 18th October	1st Submissions
HALF TERM	
w/c 7th Nov	PSA resubmission period begins
Friday 17th November	Final Submission



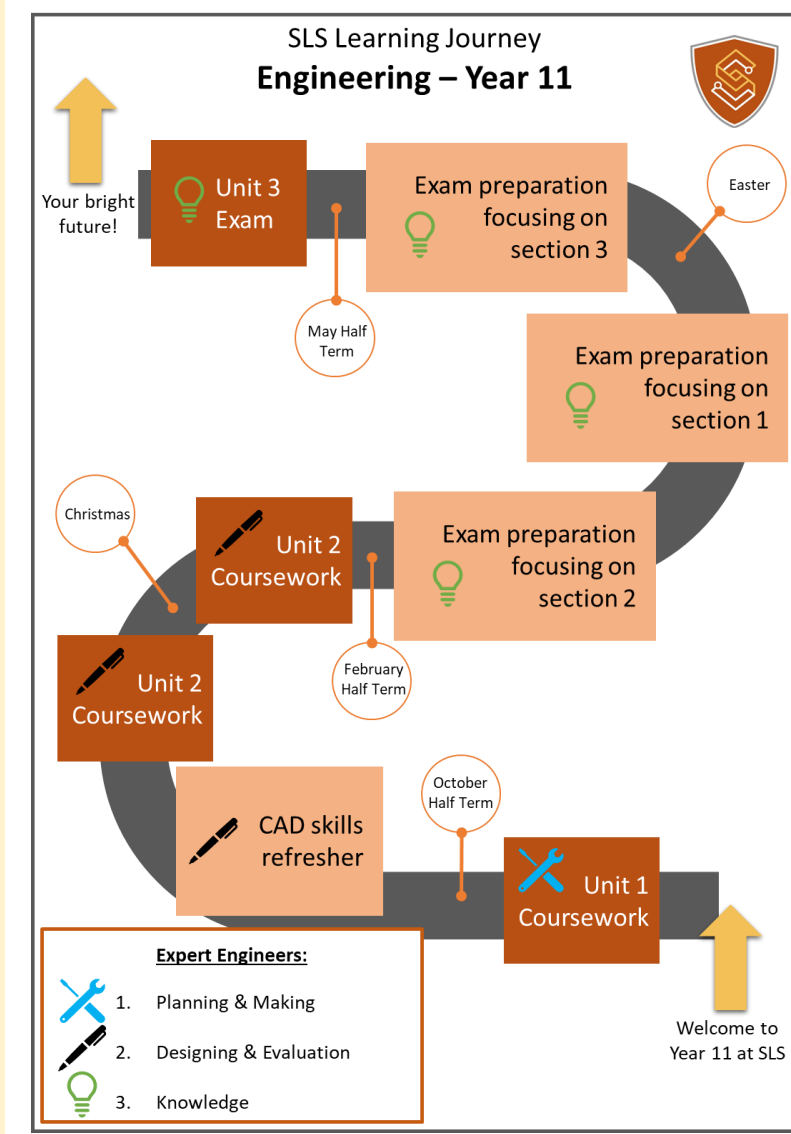
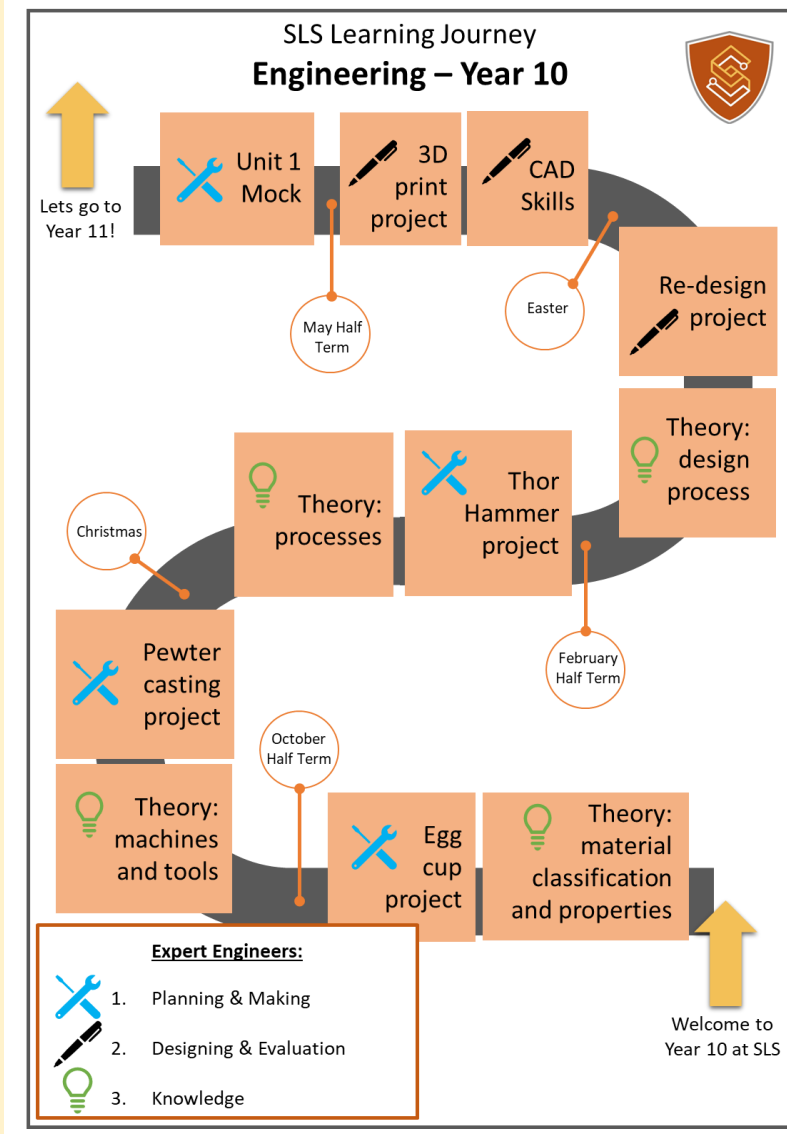
Engineering Units

WJEC Level 2 in Engineering

Unit 1 - Manufacture	Unit 2 - Redesign	Unit 3 - Exam
<ul style="list-style-type: none"> 40% (80 marks) Interpreting engineering drawings Plan the manufacture Practical (28 marks) Evaluation 	<ul style="list-style-type: none"> 20% (40 marks) Redesign one part of the Unit 1 practical 	<ul style="list-style-type: none"> 40% (60 marks) 1hour 30 minutes 3 sections Covers theory about materials, processes, design and maths



DATA PACK	
Part Number	Material
MS-A-010	12mm
MS-A-011	12mm
MS-A-012	18mm
MS-A-013	20mm
MS-A-014	25mm
MS-A-015	30mm
MS-A-016	35mm
MS-A-017	40mm
MS-A-018	45mm
MS-A-019	50mm
MS-A-020	55mm
MS-A-021	60mm
MS-A-022	65mm
MS-A-023	70mm
MS-A-024	75mm
MS-A-025	80mm
MS-A-026	85mm
MS-A-027	90mm
MS-A-028	95mm
MS-A-029	100mm
MS-A-030	105mm
MS-A-031	110mm
MS-A-032	115mm
MS-A-033	120mm
MS-A-034	125mm
MS-A-035	130mm
MS-A-036	135mm
MS-A-037	140mm
MS-A-038	145mm
MS-A-039	150mm
MS-A-040	155mm
MS-A-041	160mm
MS-A-042	165mm
MS-A-043	170mm
MS-A-044	175mm
MS-A-045	180mm
MS-A-046	185mm
MS-A-047	190mm
MS-A-048	195mm
MS-A-049	200mm
MS-A-050	205mm
MS-A-051	210mm
MS-A-052	215mm
MS-A-053	220mm
MS-A-054	225mm
MS-A-055	230mm
MS-A-056	235mm
MS-A-057	240mm
MS-A-058	245mm
MS-A-059	250mm
MS-A-060	255mm
MS-A-061	260mm
MS-A-062	265mm
MS-A-063	270mm
MS-A-064	275mm
MS-A-065	280mm
MS-A-066	285mm
MS-A-067	290mm
MS-A-068	295mm
MS-A-069	300mm
MS-A-070	305mm
MS-A-071	310mm
MS-A-072	315mm
MS-A-073	320mm
MS-A-074	325mm
MS-A-075	330mm
MS-A-076	335mm
MS-A-077	340mm
MS-A-078	345mm
MS-A-079	350mm
MS-A-080	355mm
MS-A-081	360mm
MS-A-082	365mm
MS-A-083	370mm
MS-A-084	375mm
MS-A-085	380mm
MS-A-086	385mm
MS-A-087	390mm
MS-A-088	395mm
MS-A-089	400mm
MS-A-090	405mm
MS-A-091	410mm
MS-A-092	415mm
MS-A-093	420mm
MS-A-094	425mm
MS-A-095	430mm
MS-A-096	435mm
MS-A-097	440mm
MS-A-098	445mm
MS-A-099	450mm
MS-A-100	455mm
MS-A-101	460mm
MS-A-102	465mm
MS-A-103	470mm
MS-A-104	475mm
MS-A-105	480mm
MS-A-106	485mm
MS-A-107	490mm
MS-A-108	495mm
MS-A-109	500mm
MS-A-110	505mm
MS-A-111	510mm
MS-A-112	515mm
MS-A-113	520mm
MS-A-114	525mm
MS-A-115	530mm
MS-A-116	535mm
MS-A-117	540mm
MS-A-118	545mm
MS-A-119	550mm
MS-A-120	555mm
MS-A-121	560mm
MS-A-122	565mm
MS-A-123	570mm
MS-A-124	575mm
MS-A-125	580mm
MS-A-126	585mm
MS-A-127	590mm
MS-A-128	595mm
MS-A-129	600mm
MS-A-130	605mm
MS-A-131	610mm
MS-A-132	615mm
MS-A-133	620mm
MS-A-134	625mm
MS-A-135	630mm
MS-A-136	635mm
MS-A-137	640mm
MS-A-138	645mm
MS-A-139	650mm
MS-A-140	655mm
MS-A-141	660mm
MS-A-142	665mm
MS-A-143	670mm
MS-A-144	675mm
MS-A-145	680mm
MS-A-146	685mm
MS-A-147	690mm
MS-A-148	695mm
MS-A-149	700mm
MS-A-150	705mm
MS-A-151	710mm
MS-A-152	715mm
MS-A-153	720mm
MS-A-154	725mm
MS-A-155	730mm
MS-A-156	735mm
MS-A-157	740mm
MS-A-158	745mm
MS-A-159	750mm
MS-A-160	755mm
MS-A-161	760mm
MS-A-162	765mm
MS-A-163	770mm
MS-A-164	775mm
MS-A-165	780mm
MS-A-166	785mm
MS-A-167	790mm
MS-A-168	795mm
MS-A-169	800mm
MS-A-170	805mm
MS-A-171	810mm
MS-A-172	815mm
MS-A-173	820mm
MS-A-174	825mm
MS-A-175	830mm
MS-A-176	835mm
MS-A-177	840mm
MS-A-178	845mm
MS-A-179	850mm
MS-A-180	855mm
MS-A-181	860mm
MS-A-182	865mm
MS-A-183	870mm
MS-A-184	875mm
MS-A-185	880mm
MS-A-186	885mm
MS-A-187	890mm
MS-A-188	895mm
MS-A-189	900mm
MS-A-190	905mm
MS-A-191	910mm
MS-A-192	915mm
MS-A-193	920mm
MS-A-194	925mm
MS-A-195	930mm
MS-A-196	935mm
MS-A-197	940mm
MS-A-198	945mm
MS-A-199	950mm
MS-A-200	955mm
MS-A-201	960mm
MS-A-202	965mm
MS-A-203	970mm
MS-A-204	975mm
MS-A-205	980mm
MS-A-206	985mm
MS-A-207	990mm
MS-A-208	995mm
MS-A-209	1000mm
MS-A-210	1005mm
MS-A-211	1010mm
MS-A-212	1015mm
MS-A-213	1020mm
MS-A-214	1025mm
MS-A-215	1030mm
MS-A-216	1035mm
MS-A-217	1040mm
MS-A-218	1045mm
MS-A-219	1050mm
MS-A-220	1055mm
MS-A-221	1060mm
MS-A-222	1065mm
MS-A-223	1070mm
MS-A-224	1075mm
MS-A-225	1080mm
MS-A-226	1085mm
MS-A-227	1090mm
MS-A-228	1095mm
MS-A-229	1100mm
MS-A-230	1105mm
MS-A-231	1110mm
MS-A-232	1115mm
MS-A-233	1120mm
MS-A-234	1125mm
MS-A-235	1130mm
MS-A-236	1135mm
MS-A-237	1140mm
MS-A-238	1145mm
MS-A-239	1150mm
MS-A-240	1155mm
MS-A-241	1160mm
MS-A-242	1165mm
MS-A-243	1170mm
MS-A-244	1175mm
MS-A-245	1180mm
MS-A-246	1185mm
MS-A-247	1190mm
MS-A-248	1195mm
MS-A-249	1200mm
MS-A-250	1205mm
MS-A-251	1210mm
MS-A-252	1215mm
MS-A-253	1220mm
MS-A-254	1225mm
MS-A-255	1230mm
MS-A-256	1235mm
MS-A-257	1240mm
MS-A-258	1245mm
MS-A-259	1250mm
MS-A-260	1255mm
MS-A-261	1260mm
MS-A-262	1265mm
MS-A-263	1270mm
MS-A-264	1275mm
MS-A-265	1280mm
MS-A-266	1285mm
MS-A-267	1290mm
MS-A-268	1295mm
MS-A-269	1300mm
MS-A-270	1305mm
MS-A-271	1310mm
MS-A-272	1315mm
MS-A-273	1320mm
MS-A-274	1325mm
MS-A-275	1330mm
MS-A-276	1335mm
MS-A-277	1340mm
MS-A-278	1345mm
MS-A-279	1350mm
MS-A-280	1355mm
MS-A-281	1360mm
MS-A-282	1365mm
MS-A-283	1370mm
MS-A-284	1375mm
MS-A-285	1380mm
MS-A-286	1385mm
MS-A-287	1390mm
MS-A-288	1395mm
MS-A-289	1400mm
MS-A-290	1405mm
MS-A-291	1410mm
MS-A-292	1415mm
MS-A-293	1420mm
MS-A-294	1425mm
MS-A-295	1430mm
MS-A-296	1435mm
MS-A-297	1440mm
MS-A-298	1445mm
MS-A-299	1450mm
MS-A-300	1455mm
MS-A-301	1460mm
MS-A-302	1465mm
MS-A-303	1470mm
MS-A-304	1475mm
MS-A-305	1480mm
MS-A-306	1485mm
MS-A-307	1490mm
MS-A-308	1495mm
MS-A-309	1500mm
MS-A-310	1505mm
MS-A-311	1510mm
MS-A-312	1515mm
MS-A-313	1520mm
MS-A-314	1525mm
MS-A-315	1530mm
MS-A-316	1535mm
MS-A-317	1540mm
MS-A-318	1545mm
MS-A-319	1550mm
MS-A-320	1555mm
MS-A-321	1560mm
MS-A-322	1565mm
MS-A-323	1570mm
MS-A-324	1575mm
MS-A-325	1580mm
MS-A-326	1585mm
MS-A-327	1590mm
MS-A-328	1595mm
MS-A-329	1600mm
MS-A-330	1605mm
MS-A-331	1610mm
MS-A-332	1615mm
MS-A-333	1620mm
MS-A-334	1625mm
MS-A-335	1630mm
MS-A-336	1635mm
MS-A-337	1640mm
MS-A-338	1645mm
MS-A-339	1650mm
MS-A-340	1655mm
MS-A-341	1660mm
MS-A-342	1665mm
MS-A-343	1670mm
MS-A-344	1675mm
MS-A-345	1680mm
MS-A-346	1685mm
MS-A-347	1690mm
MS-A-348	1695mm
MS-A-349	1700mm
MS-A-350	1705mm
MS-A-351	1710mm
MS-A-352	1715mm
MS-A-353	1720mm
MS-A-354	1725mm
MS-A-355	1730mm
MS-A-356	1735mm
MS-A-357	1740mm
MS-A-358	1745mm
MS-A-359	1750mm
MS-A-360	1755mm
MS-A-361	1760mm
MS-A-362	1765mm
MS-A-363	1770mm
MS-A-364	1775mm
MS-A-365	1780mm
MS-A-366	1785mm
MS-A-367	1790mm
MS-A-368	1795mm
MS-A-369	1800mm
MS-A-370	1805mm
MS-A-371	1810mm
MS-A-372	1815mm
MS-A-373	1820mm
MS-A-374	1825mm
MS-A-375	1830mm
MS-A-376	1835mm
MS-A-377	1840mm
MS-A-378	1845mm
MS-A-379	1850mm
MS-A-380	1855mm
MS-A-381	1860mm
MS-A-382	1865mm
MS-A-383	1870mm
MS-A-384	1875mm
MS-A-385	1880mm
MS-A-386	1885mm
MS-A-387	1890mm
MS-A-388	1895mm
MS-A-389	1900mm
MS-A-390	1905mm
MS-A-391	1910mm
MS-A-392	1915mm
MS-A-393	1920mm
MS-A-394	1925mm
MS-A-395	1930mm
MS-A-396	1935mm
MS-A-397	1940mm
MS-A-398	1945mm
MS-A-399	1950mm
MS-A-400	1955mm
MS-A-401	1960mm



Drop Down Days



Intervention Strategy

Year 11



Monday, 23 September 2024

Timing

Intervention sessions are often brief (e.g. 15–60 mins) and regular (e.g. 2–5 per week).

Assessment

Assessments are used to identify pupils, guide areas of focus and to track pupil progress.

Resourcing

The intervention has structured supporting resources and lesson plans, with clear objectives and possibly a delivery script.

Give it time

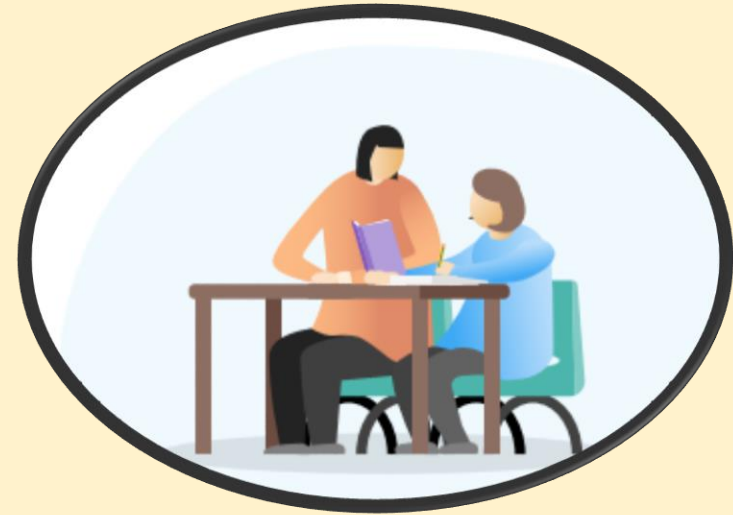
Careful timetabling is in place to enable consistent delivery. Sessions are typically maintained over a sustained period (e.g. 8–20 weeks).

Expert delivery

Interventions are delivered by a qualified teacher, or if they are unavailable, a trained teaching assistant. The intervention programme is followed precisely and suggested delivery protocols are followed.

Teacher links

If not delivered by the classroom teacher, the intervention deliverer and the teacher/s communicate regularly and make appropriate connections between out-of-class learning and classroom teaching.



Year 11 Tutors

11A	11B	11C	11D
Mr T Hedger	Mrs T Ogunlana	Mrs Evans REV	Mrs S Masoud
Maths	Maths	English	Science



Period 7

Starting wb/ 7th October 2024

Period 7
15:30 - 16:10

Targeted Students
Selected based upon
Mock Data

Tuesday

Thursday

Friday

Smaller class sizes

Groupings to change
after Mock
examinations





Stone Lodge School

Intervention Timetable for Form Time and Period 7

Cycle A week 5 through to Christmas

Form Time	Staff
Maths	TOG

Tuesday 15:30 – 16:10	Staff	Room
Geography	TOS	E005

Thursday 15:30 – 16:10	Staff	Room
Science	CCO	E206

Friday 15:30 – 16:10	Staff	Room
English	REV	E106



Supporting your child at home



Getting enough sleep



Eating the right food

Drinking enough water





"It's not what you do it's the way that you do it!"



Monday	Tuesday	Wednesday	Thursday	Friday	Saturday	Sunday
Wake up, get ready, arrive at school	Wake up, get ready, arrive at school	Wake up, get ready, arrive at school	Wake up, get ready, arrive at school	Wake up, get ready, arrive at school	Revision	
The School Day						Football match
					Revision	
Football training	Revision		Revision	Basketball		Revision

<----- Hours on TikTok/Play Station ----->



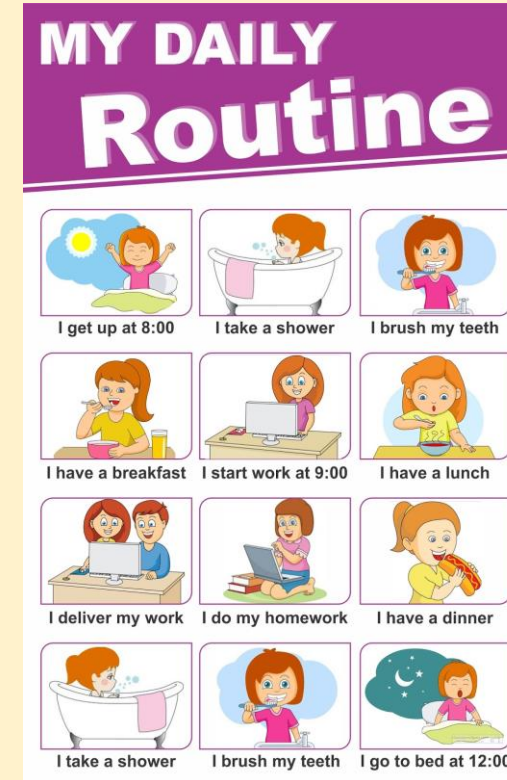
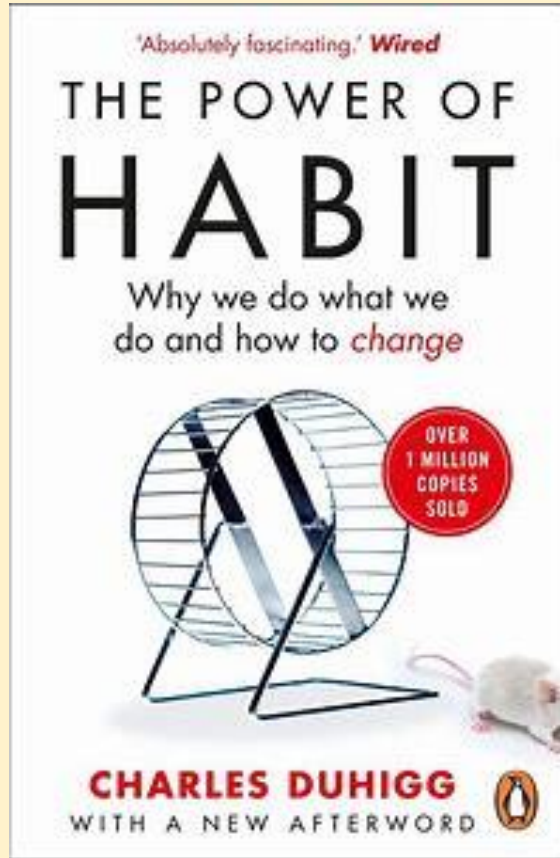
Monday	Tuesday	Wednesday	Thursday	Friday	Saturday	Sunday
Wake up, get ready, arrive at school	Get to school at 8:15am, 15 minutes of targeted Century in the Library	Wake up, get ready, arrive at school	Get to school at 8:15am, 15 minutes of English Language skills study in the Library	Wake up, get ready, arrive at school	Lay in until 10am. 30 minutes creating flashcards on artists to participation	Lay in until 10am. Complete 30 minutes of reading before football
The School Day						Football match
					Complete one piece of Knowledge Organizer work before afternoon plans	
15 minutes of Language Nut in the car on the way to football training	Revise Wolsey's Rise to Power with flashcards for 30 minutes before dinner	14:30pm finish - Knowledge Organizer in the Library until 15:30pm.	Revise compounds for 30 minutes after dinner, including a practice exam question	Complete two pieces of Knowledge Organizer before Basketball practice		Complete two pieces of Knowledge Organizer before dinner



Creating the right environment to help your child study for their GCSEs



Establishing routines



Taking breaks



Short breaks

- When helping them create a revision timetable, ensure they factor in five or ten minute breaks within 30 or 60 minute study sessions. Short bursts of studying produce much better results than long stretches. Even if they have to study all day or all evening, they should not do more than an hour at a time without having a short rest.



Retrieval practice

When you learn something, a group of neurons in the brain activate in the hippocampus, like a pattern of lightbulbs turning on, or flowers in a field.

Pathways to and between neurons can be strengthened over time.

Simple **repetition**, ie **RETRIEVING** a memory over and over again, is the best way of consolidating the pattern.

9 Ways to use retrieval practice

- 1 Past papers
- 2 Practice tests
- 3 Quizzes
- 4 Multiple choice tests
- 5 Essay answers
- 6 Answering a spoken question
- 7 Testing yourself on what was on your flashcards
- 8 Making your own questions and answering them
- 9 Having someone ask you 3 questions about a topic



SYLLABUS / RESOURCES

Remove barriers to effective revision

Make sure you have ...:

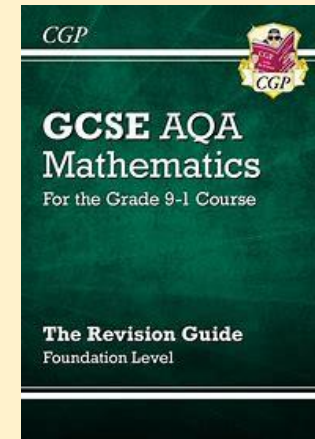
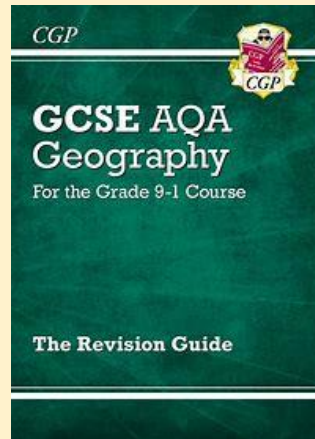
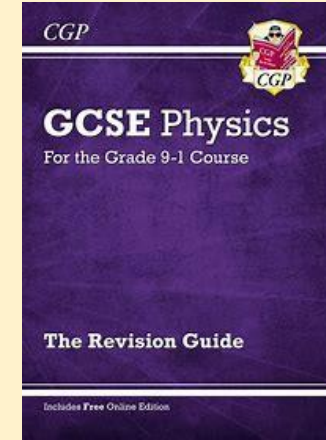
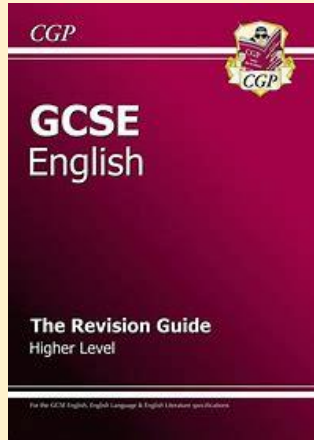
- Exam papers for subjects
- Mark Schemes
- Textbooks
- Examiners' reports

PLUS

- Coloured pens
- paper
- post-its
- flashcards



Revision Guides



Mock Exams wb/ 18th November 2024

